

FREE TEMPLATE

Heart Shaped Chocolates Box

1:12 Scale Miniature

This is a tiny 17 x 15 mm box. It is a 1:12 scale equivalent of a real size box that is appr. 20 x 18 cm

What you need

A lot of patience and:

1. Thick printer paper (I have used 67lb)
2. Printer
3. Scissors
4. Tweezers
5. Glue
6. Paint
7. 2mm wide silk ribbon (optional)

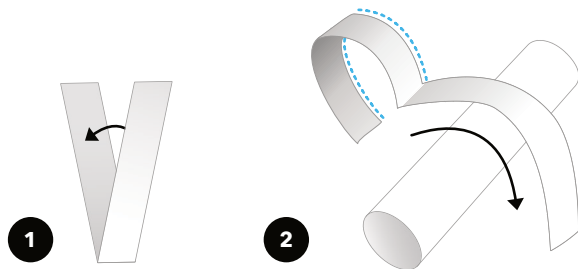
Instructions

This page includes 4 sets of the heart box template, in case things do not go smoothly at first, and you need some practice. If you get it right the first time, make some for your friends! ♥

Print this page at **100% scale**.

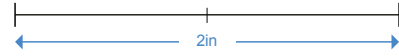
Cut out the hearts and the strips exactly at the outline. Fold each strip in the middle, so the ends would meet perfectly (see illustration 1). Shape each side into a half-heart as closely as possible, by gently running the paper a few times between your fingers and a round cylinder shape, like a pencil for example (see illustration 2). The folded corner in the middle of each strip would go at the top of the heart, and the ends will meet at the bottom pointy end of the heart. Note that the narrower strip goes onto the base, and the wider strip goes onto the cover.

Hold one strip with a tweezer and carefully put a thin trace of glue on just the left half (see dashed blue line on illustration 2). Glue the strip to the left side of the respective heart, right onto the dotted line. You may need to hold the heart down with another tweezer. Hold the strip in place until the glue sets. Let the glued half-side dry completely, then continue to glue on the other half of the strip. Glueing the strips is the most challenging part and doing just one half at a time may be easier, as once half side has dried up it will not come off and move while you glue in the rest. Put a bit of glue where the strips meet at the point of the heart. Repeat with the other heart and strip. Let all glued parts dry completely, then you can paint the box. Paint the inside, and let it dry, then paint the outside. If you like, make a tiny bow from a 2mm wide silk ribbon. Enjoy!



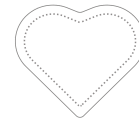
Print at 100% scale for accurate size

When printed, the bars below should measure exactly 2 inches (top) or 5 centimeters (bottom)



base strip:

cover strip:



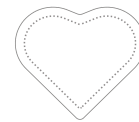
base



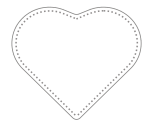
cover

base strip:

cover strip:



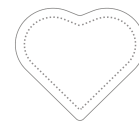
base



cover

base strip:

cover strip:



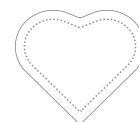
base



cover

base strip:

cover strip:



base



cover